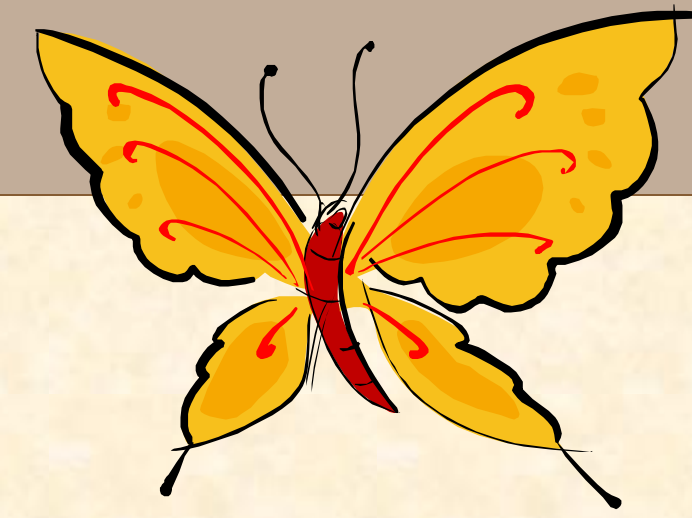


# BUTTERFLY GARDEN



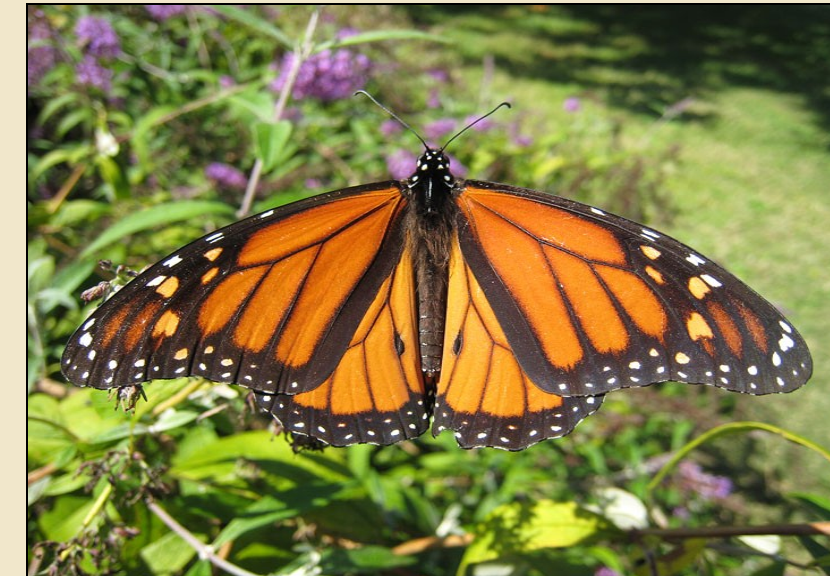
**Viceroy**  
*(Limenitis archippus)*



**Common Sulfur**  
*(Phoebis sennae)*



**Common Buckeye**  
*(Junonia coenia)*



**Monarch**  
*(Danaus plexippus)*



**Eastern Tiger Swallowtail**  
*(Papilio glaucus)*



**Red-Spotted Purple**  
*(Limenitis arthemis)*



**Red Admiral**  
*(Vanessa atalanta)*

## Nectar Plants

Nectar is a sugar-rich liquid produced by plants. Nectar is the food source of the adult butterfly and attracts these magnificent insects. Almost any plant with a colorful fragrant flower will work well in your garden. However, plants that have multiple florets producing abundant nectar are perfect for attracting and keeping butterflies in the garden.



Butterflies are not the only insects that visit our Butterfly Garden. Look also for moths, bees, and hummingbirds. In the photo above a Snowberry Clearwing moth is harvesting nectar.



**Common Buckeye Caterpillar**



**Monarch Caterpillar**



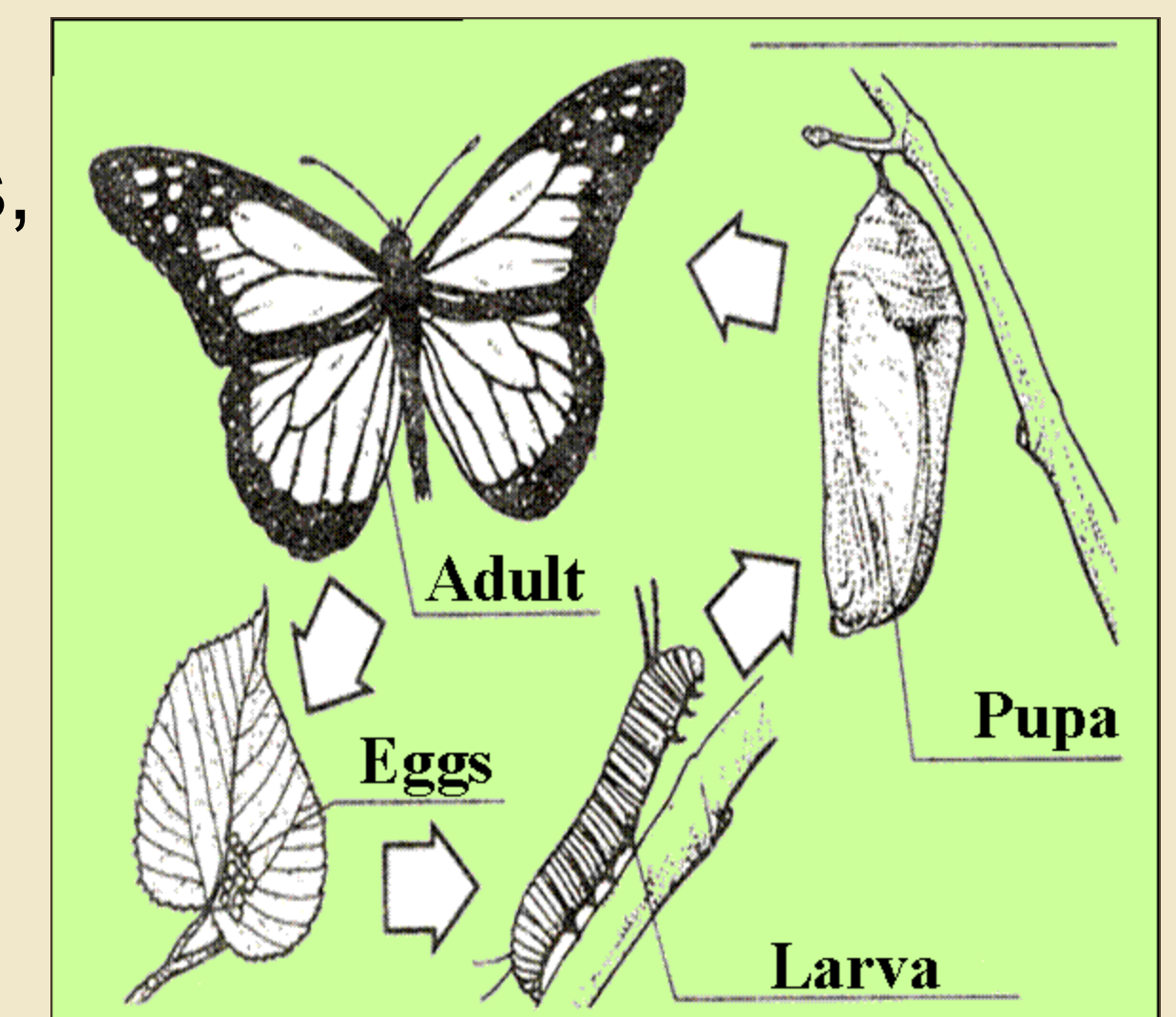
**Eastern Tiger Swallowtail Caterpillar**

## Host Plants

Host plants are crucial in providing food and shelter for butterfly eggs, caterpillars and pupa. Butterflies tend to be quite selective when choosing their host plants. For instance, the Eastern Swallowtail prefers Sycamore or Willow trees, while the Monarch likes Milkweed.

## Planning a Butterfly Garden

A butterfly garden should take into consideration the entire life cycle of butterflies, from egg to larva (caterpillar) then to pupa (chrysalis) and finally a butterfly. Certain plants can serve as hosts for early stages of the butterfly's life cycle, while other's serve as cover and nectar sources. Butterflies also require nearby "puddles" in open areas so they can congregate and extract salts and minerals from the water. Another consideration for attracting butterflies to a garden is to provide a variety of nectar filled flowers throughout the spring, summer and fall. Notice that the taller plants are located in the center of the garden, while the shorter plants, such as the Moss Phlox are planted on the perimeter. This makes it easier for butterflies to locate the flowers and easier for us to view the butterflies.



**Butterfly Life Cycle**